

# HighwayMap

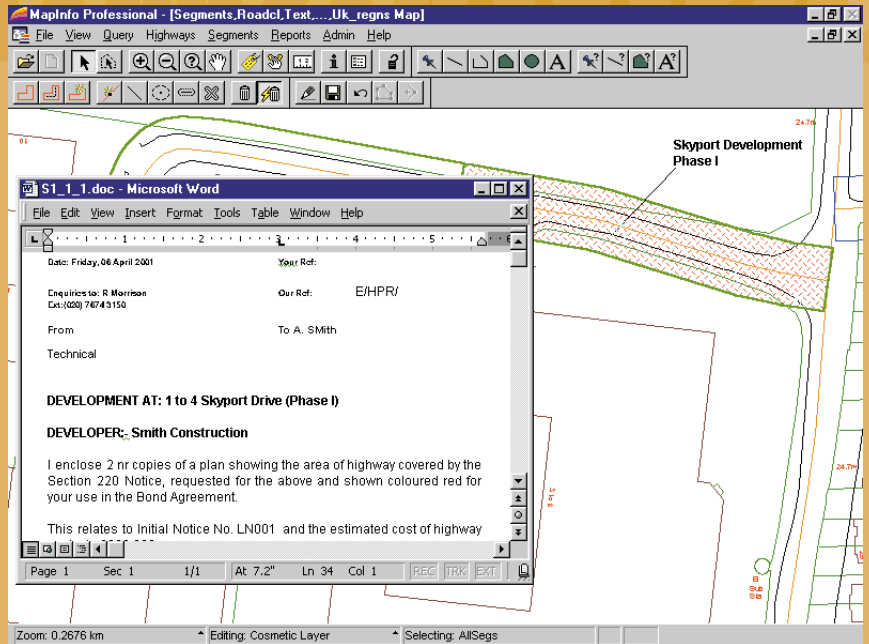
*A program in the TraffMap suite*

The complete management system for highway status records and automating the Section 38 highway adoptions process

Many residential and commercial developments include new roads which will become publicly-maintained highways. For these schemes, local authorities must undertake the lengthy formal process of highway adoption.

Keeping track of the current status of every part of the highway can be costly both in terms of time and storage space.

HighwayMap lightens the load.



**Immediate access to highway status records and documentation**

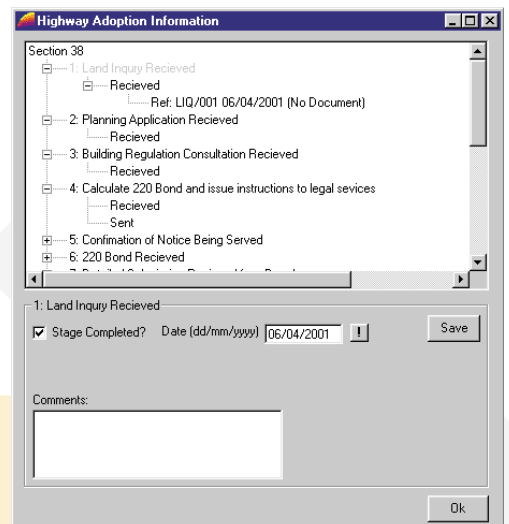
## FEATURES AND BENEFITS

### HIGHWAY RECORDS

- Highways colour-coded by type and status
- Windows™ Explorer type interface for ease of use
- Complete historical records
- Distinguishes between provisional and definitive highway boundaries

### HIGHWAY ADOPTIONS (SECTION 38)

- Easy generation of legal documentation and correspondence required at each stage
- Scans records for 'action-required' and issues reminders during adoption process
- Full electronic record of all key legal documents
- Maintains records of all contacts involved in adoption process



**Clear, logical menu structures for adoptions**

- Links to Address-Point™
- NSG capability (Level 1)
- Three levels of password protection



Desktop mapping

# HighwayMap

Developers and suppliers of computer systems for



Traffic signing



Road safety



Traffic monitoring



Parking & orders



Desktop mapping



Bus planning and operation



Bespoke development

## Maintains highway status records

The status of each section of the highway network is colour coded on the map, with all relevant documentation attached, for easy reference. Linking or separating specific segments of highway as a result of change of status or classification is easily achieved, with all correspondence automatically combined or copied to the new record.

HighwayMap users can choose their own colour and line styles to distinguish between proposed and definitive highway boundaries. The system updates the colour coding automatically in response to changes in status.

Street gazetteers facilitate speedy access to an area of particular interest, so that routine queries, and clarifications on responsibility for highway maintenance, can be handled with minimum effort.

## Manages highway adoptions

HighwayMap includes all stages of the Section 38 process, and links to Microsoft Word templates for automatic document generation. The system enables rapid access to all associated correspondence and legal documents via a single mouse click, and includes a facility to generate reminders for action required at each stage and approaching deadline to assist in the management of the adoption process. Stage 1 Certification, Stage 2 certification and completion reminder reports are all generated.

Different stages reached by separate phases of the same development are clearly distinguishable on screen.

## Flexible recording, querying and reporting

HighwayMap produces a variety of user-configurable reports in which it is possible to specify the level of detail contained, and to obtain summary listing by contractor, stage of adoption, or status of all segments along a particular route. Selections and report styles can be saved for repeated future use, saving time, and ensuring consistency of reporting.

Built in flexibility enables users to include additional fields for storage of supplementary information, while three levels of password access ensures security of data is maintained.

## Historical referencing

HighwayMap provides a full historical record of changes in highway status for all parts of the highway network, including adopted highways, in an easily accessible mapping environment.

Diary-style entries provide a summary of all tasks carried out, with changes to highway status automatically added to the record without manual intervention. It is possible to carry out searches and queries by date in response to specific requests for information.

## Links to other software

HighwayMap links to OS Address-Point™ and provision has been made to attach National Street Gazetteer ID references (USRN).

The program can accept electronic documentation from a wide variety of word processing and spreadsheet packages, while links to Microsoft Word™ enable the automatic generation of relevant correspondence from within HighwayMap itself.

HighwayMap is fully compatible with the other specialist traffic engineering systems in Buchanan Computing's TraffMap suite (ParkMap, AccsMap and SignMap). It may also be used with the many MapInfo applications produced by other MapInfo UK local government partners.

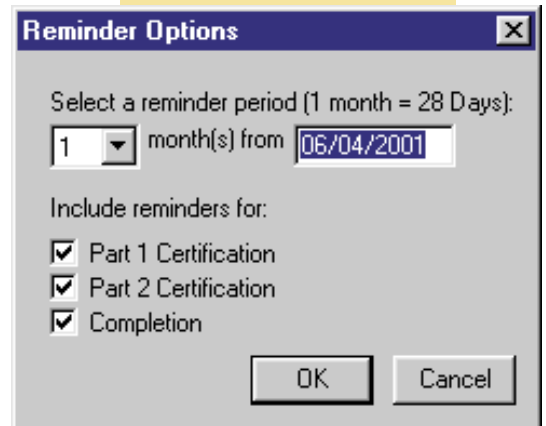
Optional import and export facilities enable the viewing of HighwayMap data in most other popular mapping systems.

## SYSTEM REQUIREMENTS

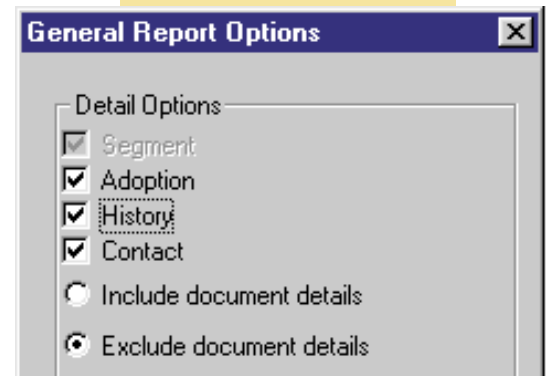
HighwayMap runs under Windows 95, 98, NT4, 2000, ME and XP on a Pentium 133 or above. It requires 32Mb of RAM. Multi user access on a network is supported (subject to licensing).

## MAP DATA

HighwayMap makes use of digital mapping, such as Ordnance Survey Landline and Address Point, available to local authorities via service level agreements. It is easily updated when revised maps are published.



Generate reminders to avoid missed deadlines



User-configurable reports



This product includes mapping data licensed from Ordnance Survey ©. Crown Copyright 2001. Licence Number 100027293.

MapInfo and MapInfo Professional are trademarks of MapInfo Corporation. Windows and Windows 95, 98 and NT are trademarks of Microsoft Corporation. Address-Point is a trademark of Ordnance Survey. All other trademarks acknowledged.