

ParkMap Modules

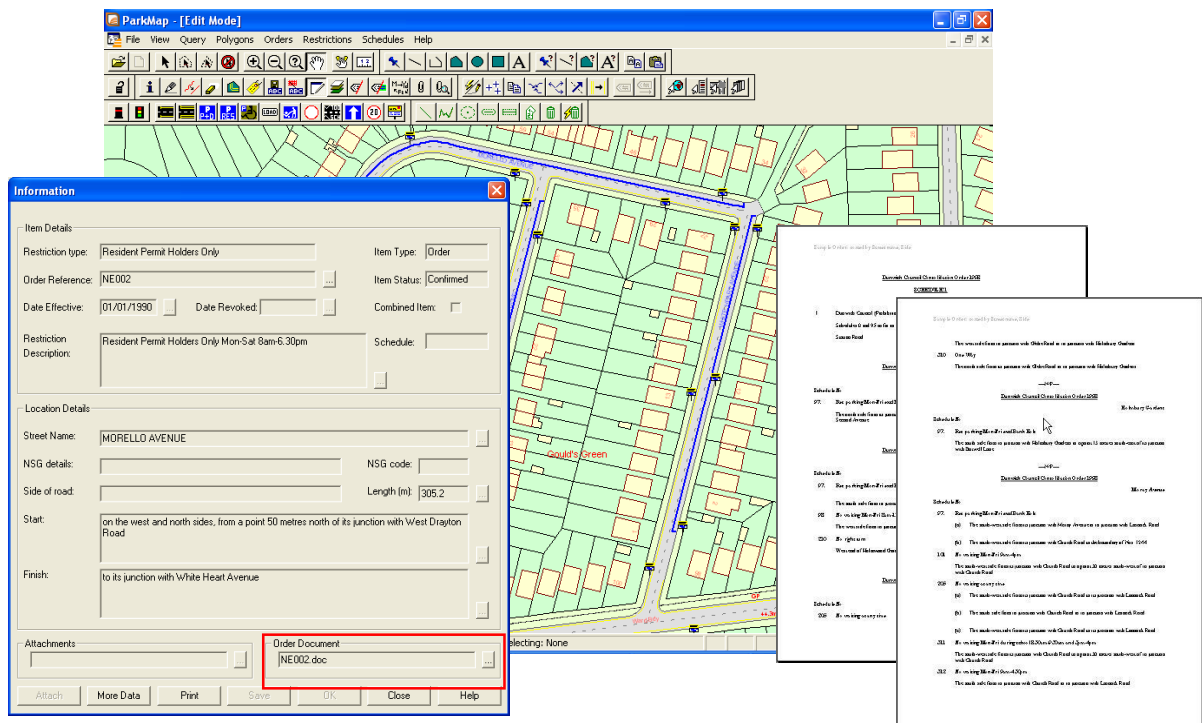
Functionality to enhance the management of Traffic Orders

Schedule Generation Module

The schedule generation functionality allows users to automatically generate traffic order schedules in Word, from the information in the ParkMap database.

All information required for inclusion in the order schedules is recorded and stored on each mapped restriction within ParkMap. This includes the start and finish descriptions of the order and details of the times of operations.

The schedule generation function will pull the relevant information from the database and automatically produce the draft traffic order. ParkMap can be configured to use templates of users own TRO documents to draft the new schedules. Once created, the schedule document can be associated with every item within an order for easy retrieval.



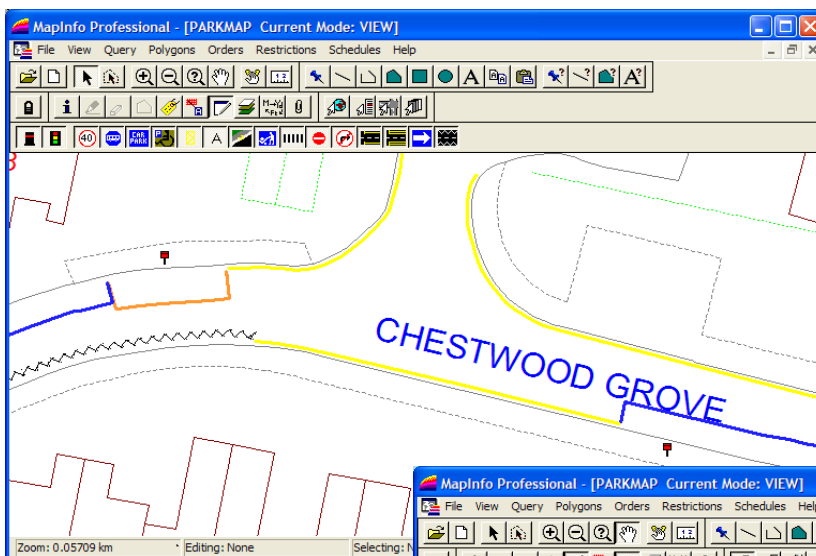
Each Order document produced is attached to every item in the order

Map Schedules Module

Many authorities are now considering the use of paper maps in their traffic order documents in place of the traditional text schedules describing the location of each restriction.

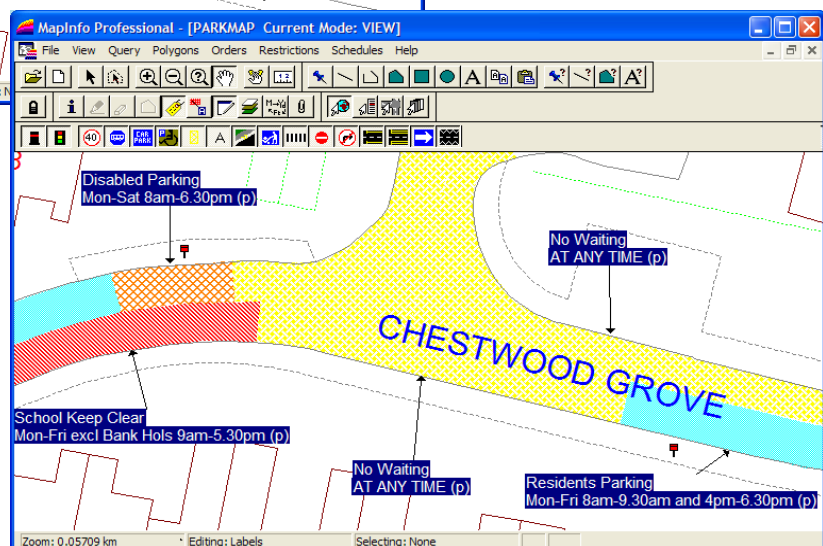
Once the orders have been mapped within ParkMap, the Map Based Schedules functionality enables the user to manage the production, storage and retrieval of date stamped and sealed maps for use in representations and answering general queries and appeals.

ParkMap provides the flexibility to manage orders the way an authority wants to. The user has the choice between storing the orders as shaded areas or diagrammatic line and bay markings.



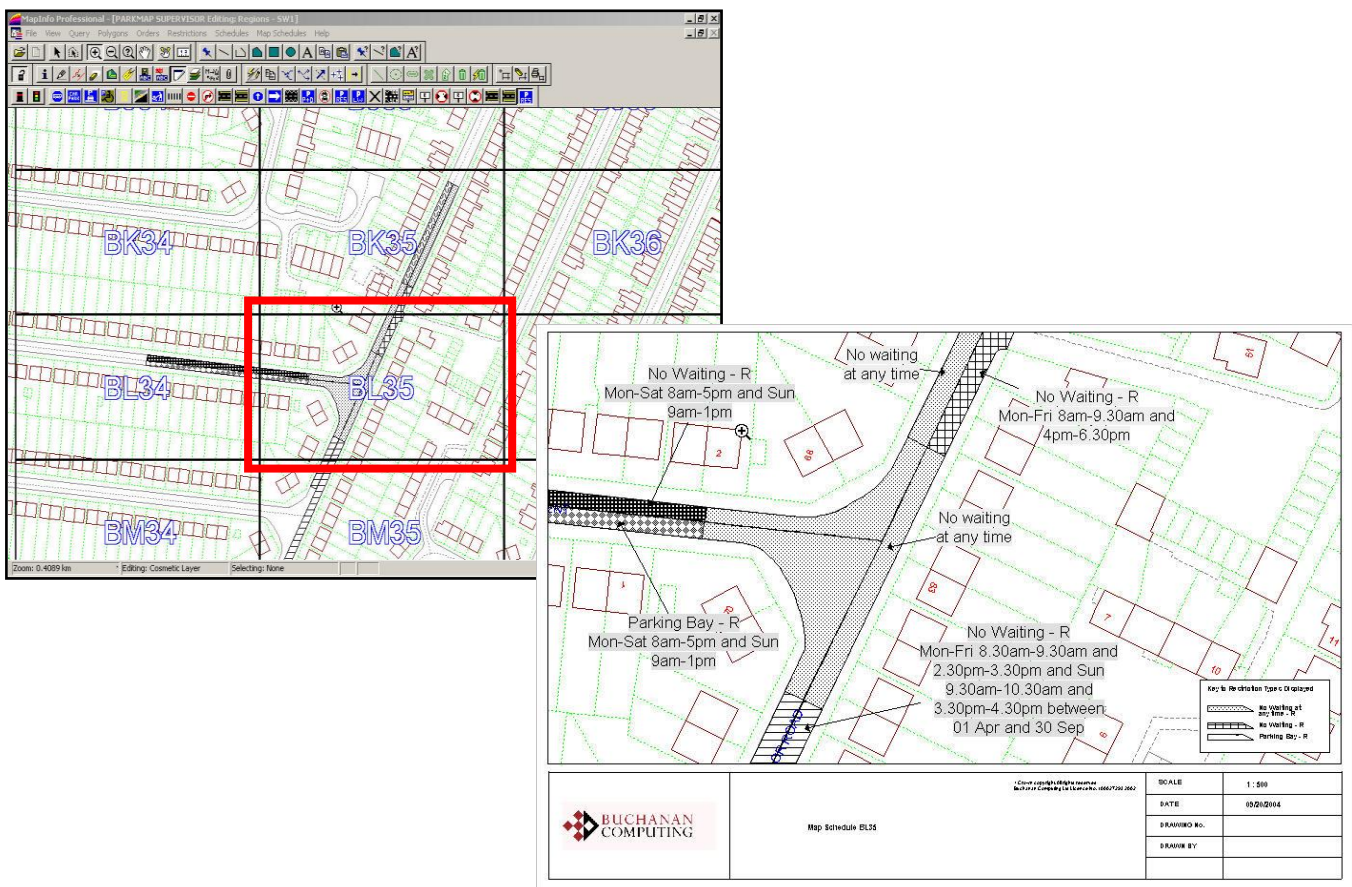
Diagrammatic lines to represent restriction markings

Shaded areas to indicate restrictions



The Map schedules module enables users to:

- Cover the authority area with referenced map tiles and set a grid to the scale desired for map production.
- Batch process all the map tiles within the grid that contain confirmed orders and produce date stamped and sealed maps using a predefined template. Any subsequent orders confirmed will automatically produce a set of date stamped and sealed maps.
- Query the sealed maps historically to view the one applicable to any date in the past. This enables the user to see the orders as they were on the date of issue of a parking notice, even if they have since been amended or revoked.
- Draw shaded area of carriageway with as little as two clicks of the mouse and manage the styles of shading to represent different types of restriction and times of operation.
- Automatic labelling and retention of label positions.



Locate a tile within the grid and produce the sealed map schedule for any date specified

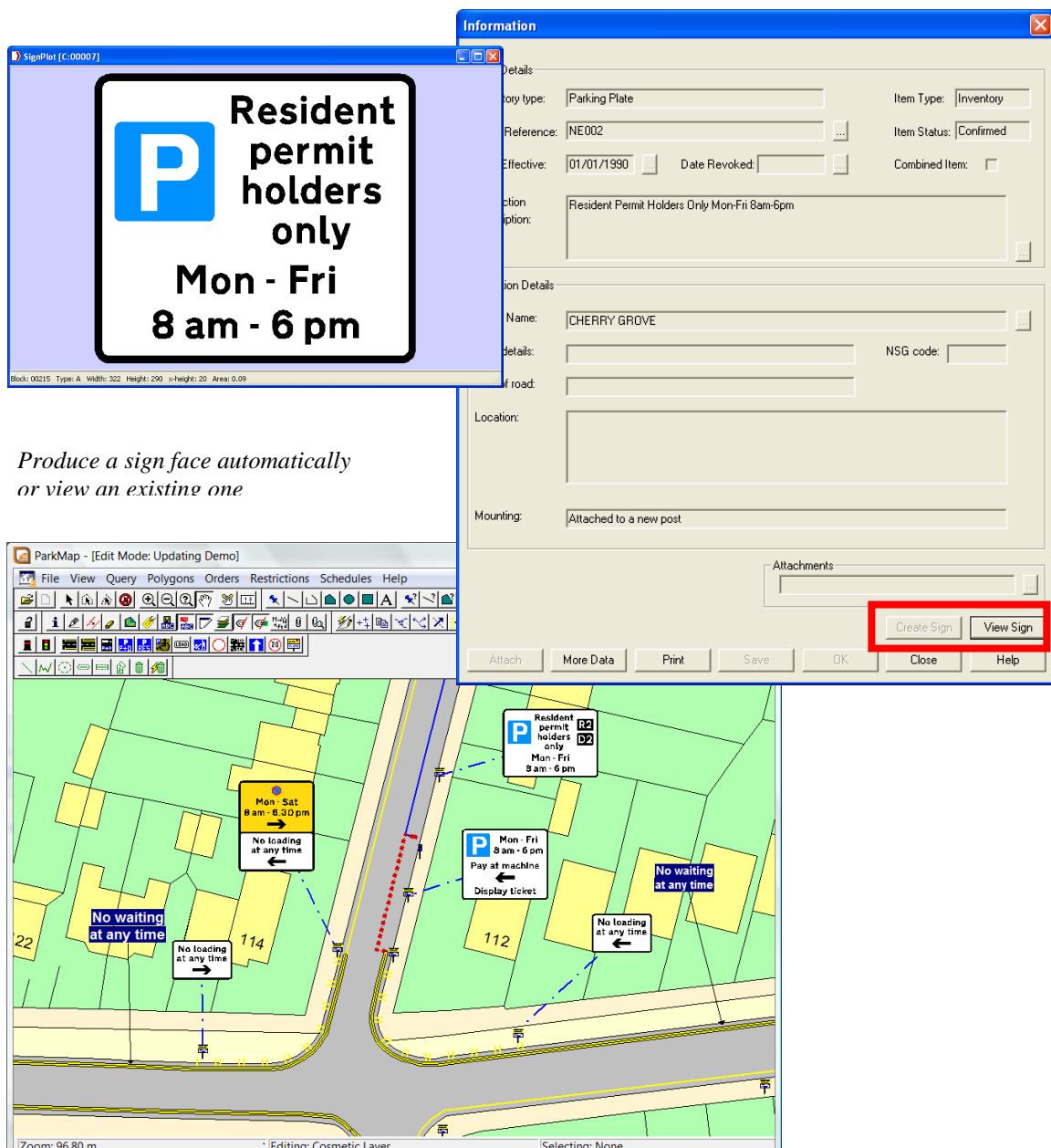
Parking Plate Generation

The Parking Plate Generation module automatically generates parking plate sign faces from a simple text description in ParkMap.

On activating the functionality, a parking plate for the appropriate restriction will be created, correctly designed, with the TSRGD 2002 rules automatically applied to the sign. Each sign generated can then be to the parking plate symbol in ParkMap.

The sign design can be printed, copied & pasted, or exported to DXF/DWG/EPS format to be read by other systems.

For users in Wales, the link will generate bilingual plate designs.

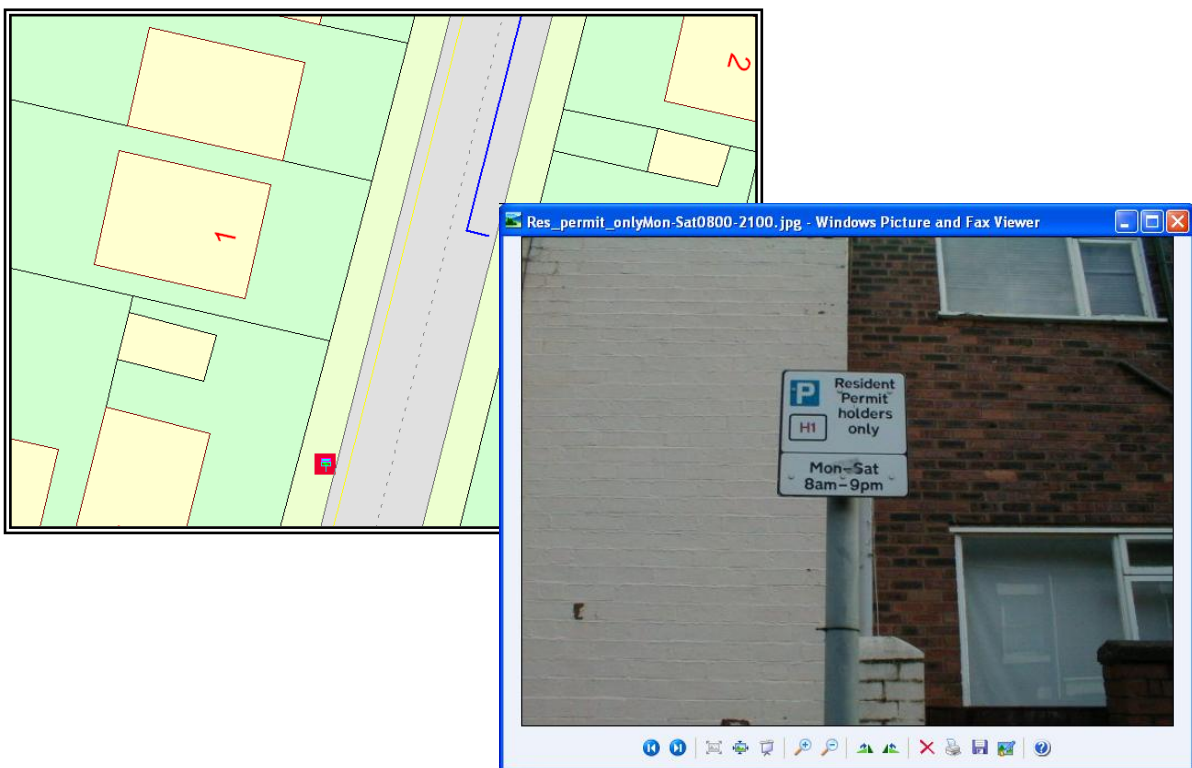


*Produce a sign face automatically
or view an existing one*

Photograph / Document Attachment Module

This facility stores site photographs alongside restrictions, so that they may be accessed by simply clicking on a restriction. It is possible to keep visual records of signage, and call up images of streets, to gain a wider understanding of areas where parking and other restrictions are applied.

Documents and spreadsheets may also be attached to restrictions, to record income from parking meters, the results of any surveys, and any other information, which the user would like to be able to access directly from the map.



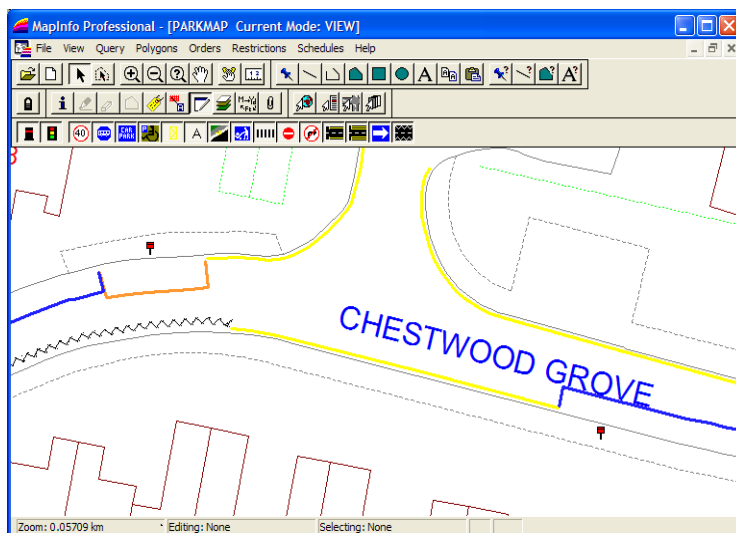
Any items within ParkMap can have photos or documents attached

ParkMap - LineMap Link

The link enables users to get even more use out of their ParkMap system by connecting it to LineMap, the system for road markings design. This link enables users to automatically generate accurate road markings as they are plotted within ParkMap.

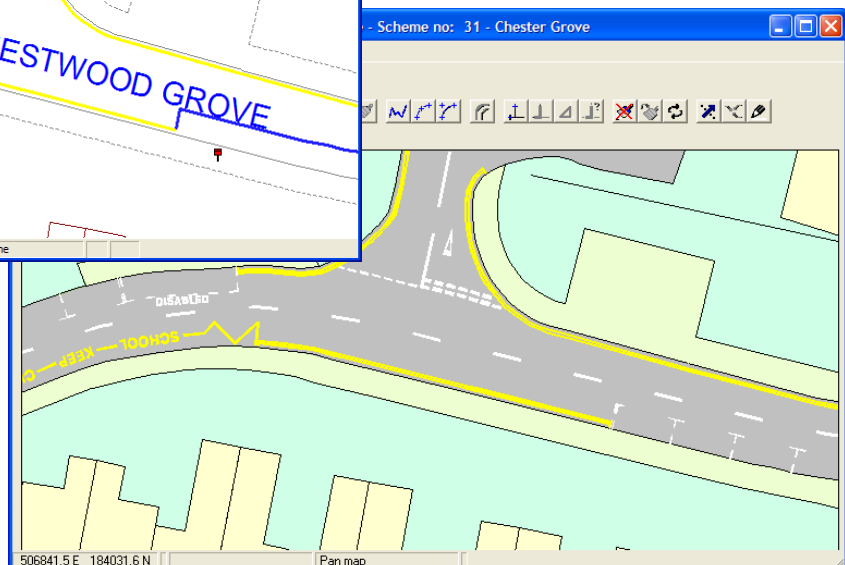
LineMap is a dedicated map-based tool for traffic management scheme design and is the only road markings design and management GIS to include all lines, text and symbols included in TSRGD 2002 and the Pedestrian Crossing Regulations. These design rules are automatically applied to all markings mapped, so that the user can quickly draw up accurate, full colour representations of highways, traffic management and safety schemes as they would look on the ground.

The free link enables users to transfer line restrictions mapped in ParkMap to the LineMap database, where they are automatically redrawn to TSRGD 2002 design rules. All markings therefore need only to be mapped once, and the link enables users to view traffic orders in conjunction with all other road markings in a single view.



Restrictions stored in ParkMap

Road marking design produced in LineMap



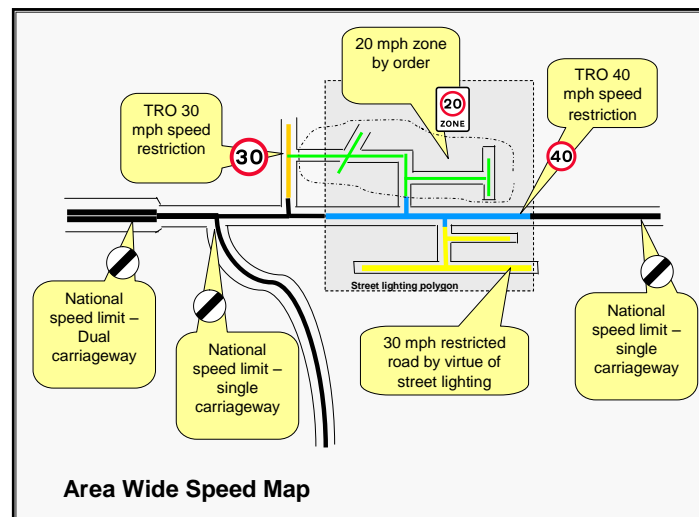
Moving Order Module

The efficient way to make, manage and communicate speed limits and moving traffic orders.

MovingOrders adds to ParkMap's capability by including a set functionality specifically designed for creating, and managing all types of moving traffic orders. These new tools will work in conjunction with ParkMap standard tools, allowing you to efficiently manage all your traffic orders through one system.



OS MasterMap ITN (Integrated Transport Network) data is translated and decoded to form the road network used throughout MovingOrders. Details of prohibited turns, restricted access, width limits, etc. can be copied from the ITN network into draft traffic orders, then edited or added to. When a draft order is confirmed the changes are written back to the underlying network. Data entry routines allow quick selection or all roads in an area, along a series of links, or enclosed by defined terminal points.



By combining traffic orders with default speeds for different road types and for lit areas, MovingOrders produces a continuous area-wide map of speed limits on all roads.

Audit Trail Module

This module provides ParkMap with an audit log facility that keeps a record of changes to traffic orders and ParkMap features. It records most transactions involving ParkMap data, both for data entry for individual restrictions and their details and monitors the progress of orders through their lifecycle.

In order to provide an accurate log, the ParkMap security becomes user based when this module is installed, with individual user names, passwords and levels. When starting ParkMap the user will be required to login. This can be tied to existing network security settings if required.

The audit log is an automated process that occurs in the background whenever ParkMap data entry is carried out. It also records changes to configuration settings, table structures and most administrative functions as well as changes and additions to restriction types, enforcement details and other look ups that are available ParkMap-wide.

Once added to ParkMap, the module will add audit records automatically to items within the database. These are divided into changes to orders, access rights, attempted login failures and queries and searches performed. Supervisors will be able to generate a report listing all relevant changes.

TRAFFMAP
Parkmap
Report run for: All users

ParkMap Data Audit Log Report
All entries on or between: 10/11/2006 and 01/01/2007

STANDARD DATA ENTRY - ORDERS/INVENTORY/ANNOTATIONS										
Date	Time	User Name	Action	Table Updated	Order	Item	Field	Old Value	New Value	Notes
13/11/2006	10:29	julia	EDIT	NEW4	ffdf	111	side_of_road		inner side	Updating items: 111, No updated
13/11/2006	10:29	julia	EDIT	NEW4	ffdf	111	start		from its junction with	Updating items: 111, No updated
13/11/2006	10:29	julia	EDIT	NEW4	ffdf	111	finish		to the intersection of the prolongations of the northern kerb line of and the northern kerb line of northwards for a distance of metres	Updating items: 111, No updated
15/11/2006	11:32	julia	EDIT	NEW4	ffdf	108	bLocality		hhhh	Updating items: 108, No
22/11/2006	09:30	julia	ADD	ORDTITLE						New title record created f
22/11/2006	09:30	julia	ADD	NEW5	neworda					New proposed order crea
22/11/2006	09:31	julia	ADD	NEW5	neworda	112				New item: 112, No waitir
22/11/2006	09:31	julia	EDIT	NEW5	neworda	112	order_ref		neworda	Setting val for item: 112, l
22/11/2006	09:31	julia	EDIT	NEW5	neworda	112	item_ref		112	Setting val for item: 112, l

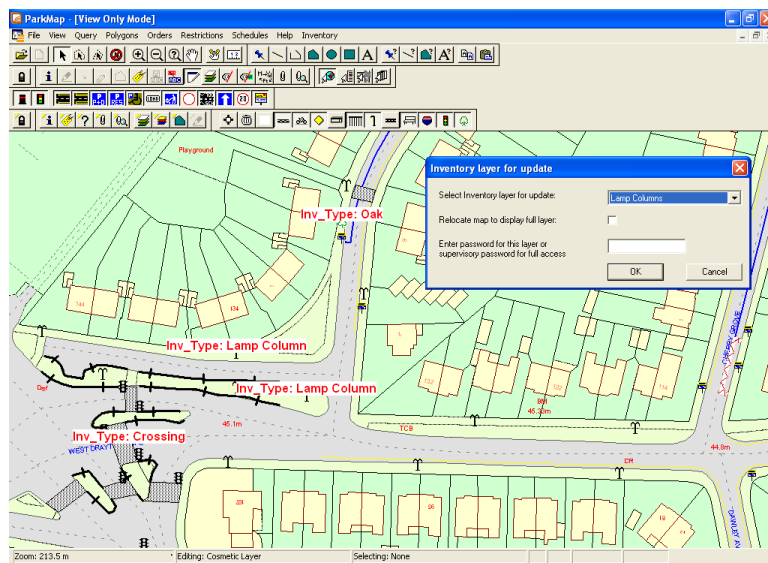
An Audit report can be produced detailing the deletions, edits and additions to the database

InvMap: Street Inventory Module

InvMap offers the facility to map all kinds of general highway inventory items, including bins, lighting columns, footways crossovers and anything else the user wants to map.

Its up to the user how detailed or general the information is stored against each inventory type will be, as each layer is totally configurable, and with layer by layer password control, different departments can add to and edit their own layers for everyone else to see.

InvMap also includes query and reporting facilities to enable access to the data and will produce summary listings of street inventory.

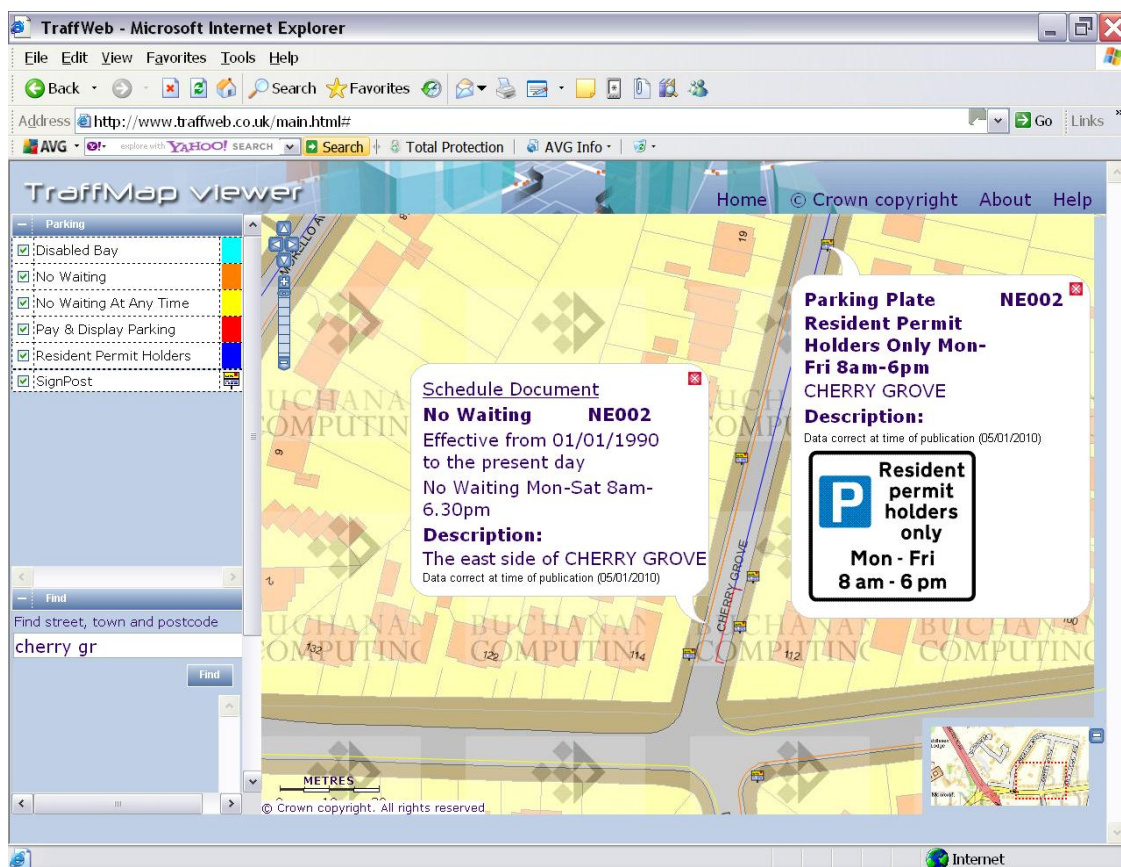
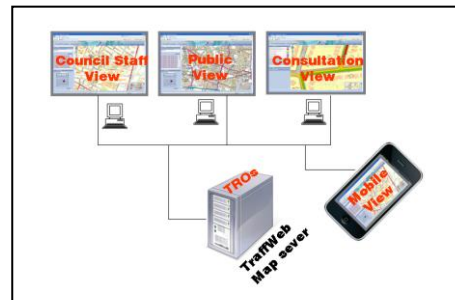


InvMap provides the ability to map a wide range of inventory items

TraffWeb

TraffWeb is a data portal, providing live access to a published version of your ParkMap data through a standard Internet browser. It allows users to obtain the information they need in the simplest way. The publication of the Traffic Orders remains with the Order Makers and is controlled by ParkMap.

Different data views can be configured allowing users to see only information that they need. Simple queries, such as *where can I park?*, are answered without initially providing too much detail. However, more information is available (from the underlying traffic order, for example) to allow TraffWeb users to answer their own detailed requests. This saves the time of authority staff and reduces the number of FoI applications.



TraffWeb can be deployed on a web server running any common operating system, including Windows and Linux. Client computers access TraffWeb via their normal Internet browser, with no local installation needed. Supported browsers include: Internet Explorer (6 or above), FireFox and Opera.

ParkMap Training Modules

Module 1: ParkMap essentials <i>(0.5 day)</i> £650 <ul style="list-style-type: none"> • System overview • Zooming options • Gazetteers search • Orders & restrictions to display • Accessing information (data query) • Map selection • Reporting • Map production 	Module 2: Order creation & management <i>(0.5 day)</i> £650 <ul style="list-style-type: none"> • Creating/Managing new proposed orders • Generating new restrictions • Amending restrictions • Editing orders/restrictions • Generating schedules • Confirming & amending order • Simulation mode • Revoking orders & consolidation exercise
Module 3a: Administration & Maintenance <i>(0.5 day)</i> £650 <ul style="list-style-type: none"> • Setting up OS Mastermap mapping • Setting up gazetteers • Customising print templates & copyright statement • Defining/Maintaining restrictions types • Defining/Maintaining times & descriptions • Editing workspaces & ParkMap setup • Audit trail module • Modules management 	Module 3b: Advanced administration <i>(1 day)</i> £1,150 <ul style="list-style-type: none"> • Module 3a core content • System requirements • ParkMap/MapInfo installation • Folders/Paths management • Setting up gazetteers & maps • ParkMap & MapInfo setup • Audit trail module • Modules management & setup
Module 4: SignPlot & LineMap link <i>(0.5 day)</i> £650 <ul style="list-style-type: none"> • Setting up TSRGD references • Linking signs between ParkMap and SignPlot • Sign face display & setup • Linking restriction types • Loading & displaying LineMap schemes • Generating road markings • Generating reports 	Module 5: LineMap link <i>(0.5 - 1 day**)</i> £650 - £950 <ul style="list-style-type: none"> • Linking ParkMap restrictions • Viewing LineMap TSRGD restriction types • Display/Update LineMap schemes • Generating road markings • Generating markings from existing ParkMap restrictions • Displaying confirmed LineMap schemes • LineMap link reports
Module 6: InvMap link <i>(1 day)</i> £950 <ul style="list-style-type: none"> • Managing & maintaining inventory layer • Entering/Editing new items • Attaching/Linking files to inventory items • Altering map display • Importing & exporting inventory layers • Multi-site or remote working • Setting up gazetteers • Map production 	Module 7: Tailored course <i>(1 day)</i> P.O.R <p>Other advanced or bespoke courses are available on client's request. For more information please contact us.</p>

These prices are based on 5 delegates attending the course and are exclusive of VAT. A discount of up to £100 is available when the course is carried out with our training data. Courses can be run either at our or your offices. Training at your offices will incur the cost of a standard return rail fare from Buchanan offices, and should an overnight stay be required £110 will be added to cover hotel and subsistence costs.

If 2 half-days of training are ordered for the same day, a 50% discount will be applied to the cheaper of the two modules.

* For either text or map schedules, ** One day course incorporates additional LineMap training

Module 1 & 2 are accredited by the Institute of Highway Engineers



Software solutions for traffic professionals

227 Shepherds Bush Road , London W6 7AS

Tel: 020 8846 3220

Sales@BuchananComputing.co.uk

www.BuchananComputing.co.uk