



SignMap

A program in the TraffMap suite

Comprehensive map-based system for the design, maintenance and management of traffic signs

Keeping a detailed, up-to-date inventory of traffic signs has traditionally been an onerous task. But having a system is essential to address the Government emphasis on asset management and the need to maintain signs as economically as possible.



Signs visible on the map

Sign Face Details

Scheme number:	30	<input type="checkbox"/> Sign to be Removed
Scheme name:	Marsh Green mini Roundabout	
Sign no.:	37	Sign type: Direction
Easting:	508874.8	Sign symbol: Two Posts
Northing:	180045.35	Sign material: Micro-prismatic
SignPlot file:	C:\SPWIN\SIGNMAP_AS	Ground type: Backfill & disturbed gr
SignPlot block:	round3	Erection date: 01/01/2008
Max x-height:	0	
Height:	1419	
Width:	2464	
Diagram no.:	LBH/24/03-SW	
Schedule notes:		

Mounting More Data Print Attach... Save Close

All information readily available

Whether for routine tasks, such as replacing missing, damaged and life-expired signs, or for designing a major new scheme, SignMap offers the solution.

SignMap treats signs as individual assets, but manages them as a system.



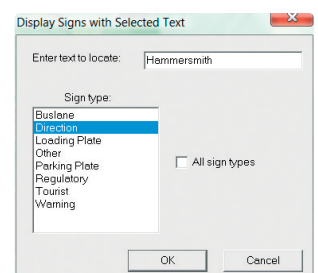
Store structural details

Inventory and asset management

- Ready access to sign face and structural data
- Records and monitors inspections and maintenance
- Produces statistics and management reports
- Links photographs, reports, spreadsheets and other documents
- Identifies separate signs on the same structure
- Compatible with TD25 and other maintenance standards
- Extensive search and select, including by sign face text
- Assists with directional signing continuity

Updating and scheme design

- Keeps proposals separate, private and secure until implementation
- Links to sign face and structural design and records the data
- Produces schedules and bills of quantity
- Includes ducting and cabling for illuminated signs
- Provides for the proposed removal of signs



Assists with continuity

SignMap

Comprehensive information

SignMap displays the location of each traffic sign against a map background, optionally accompanied by the sign face image in colour or outline. The symbol used is colour-coded by sign type and indicates the type of structure and its orientation.

A mouse click gives access to structural details, site information, maintenance records and a user-configurable database for the selected sign. Sign and site photographs and other documents can be attached to form a comprehensive record, allowing ready access to all the data, whilst protecting it against unauthorised changes.

Continuity and updating

Many authorities still have signs showing superseded route numbers, facilities that have closed, or giving destinations that are not consistent with those shown at adjacent junctions. SignMap identifies such problems by reading, understanding and searching for text and symbols on the sign faces. This facilitates the mass updating of signs when destinations, route numbers, diversion routes or traffic orders change and helps to check the continuity of directional signing.

Generate junction plans

SignMap produces detailed junction plans, complete with labelled and referenced sign faces, avoiding the

need for CAD or any other software. It distinguishes between proposed and existing signs, and those to be removed, providing clear guidance to signing contractors. Accompanying sign schedules and bills of quantity are generated, saving time and avoiding accidental omissions. SignMap identifies illuminated signs and provides for cable runs and ducts to be indicated and recorded.

Create new signs

For users of SignPlot software, newly designed signs, with their structural and foundation details, are imported directly into SignMap. Passively safe supports to BS EN 12767 are provided for. Measuring tools and a zoom facility enable the locations of signs to be recorded accurately.

Maintenance history

Users with the appropriate access rights can update maintenance records and other sign information from a series of pull-down menus. The results of site visits, reports and any necessary action can be added to form a full history of each sign, which can grow to any length.

Reporting

A flexible report generation tool allows almost any tabulation to be quickly produced. For example, an authority wide summary of a particular type of sign, or signs associated with an individual scheme or maintenance contract can be listed. Size, location,



Signing and lining clearly displayed

illumination, structure, condition, TSRGD diagram and any other stored data may be included. This facilitates the planning of sign maintenance and replacement programmes in accordance with TD25 and other standards.

Bills of quantity

For major projects, SignMap can generate finished bills of quantity, in accordance with the Method of Measurement for Highway Works. The format can be modified for individual requirements and additional items incorporated for both new signs and those scheduled for removal.

Links to other software

SignMap is fully compatible with other specialist traffic engineering systems in Buchanan Computing's



TrafficMap suite, including SignPlot, SignLoad, LineMap, ParkMap and AccsMap. When used in conjunction with LineMap, realistic drawings can be produced showing all the on-street signing and lining. The ParkMap link enables regulatory signs to be edited and controlled in ParkMap, but fully visible in SignMap.

Reports and map extracts can be directly exported to word processing and spreadsheet packages for incorporation into contract documents and reports or for further analysis.

SYSTEM REQUIREMENTS

SignMap runs under all recent versions of Windows™ including Vista. Microsoft and Citrix 'thin client' solutions are also suitable. Licences for access over a local or wide-area network are available.

SignMap will output to all Windows-compatible printers on any available paper size.

MAP DATA

SignMap makes use of digital mapping such as Ordnance Survey MasterMap, but raster and other map formats are also suitable. A converter is available to translate GML or GZ mapping, or SignMap will read background mapping directly from most server systems including MapInfo, Oracle Spatial and ArcSDE.

CONNECTIVITY

Sign records can be exported to a variety of formats including MapInfo Tab, ESRI Shapefile, DXF, DWG and

Access tables to make them available to users of most other popular mapping systems. Tabulated data may be exported to Excel for graphical presentation, while text or map extracts can be directly transferred to Word or other word processing packages for reports and presentations.

This document includes mapping licensed from the Ordnance Survey ©Crown Copyright 2007. Licence Number 100027293.

MapInfo and MapInfo Professional are trademarks of MapInfo Corporation. Windows and Windows Vista are trademarks of Microsoft Corporation. MasterMap and Address-Point are trademarks of Ordnance Survey. Citrix is a registered trade name of Citrix Systems Inc. SignMap, ParkMap, TrafficMap, SignPlot, SignLoad and LineMap are trademarks of Buchanan Computing Ltd. All other trademarks acknowledged.



227 Shepherds Bush Road, London W6 7AS
Tel: 020 8846 3220 Fax: 020 8741 9919
Email: sales@BuchananComputing.co.uk

