

Parking & orders

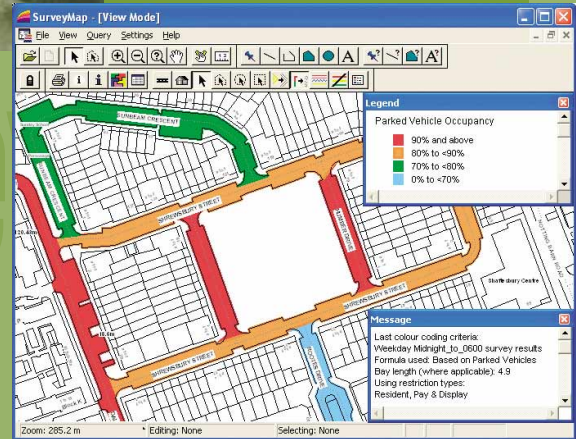
SurveyMap

A program in the TraffMap suite

Parking survey data analysis and presentation software

Local Authorities need to monitor and understand parking behaviour on their streets during the design and ongoing review of controlled parking zones.

SurveyMap is the ideal tool for storage, analysis and assessment of parking survey data, providing instant access to information and flexibility during analysis and reporting that could make trawling through numerous hard copy reports and spreadsheets a thing of the past.

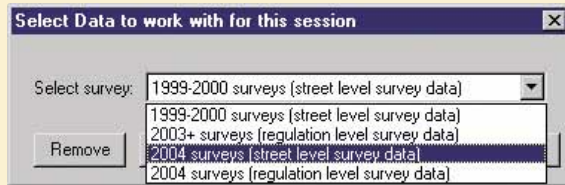


View colour-coded occupancy

FEATURES AND BENEFITS

PARKING SURVEY FINDINGS

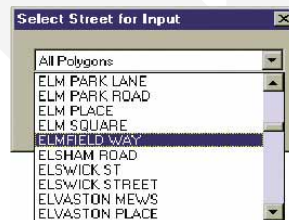
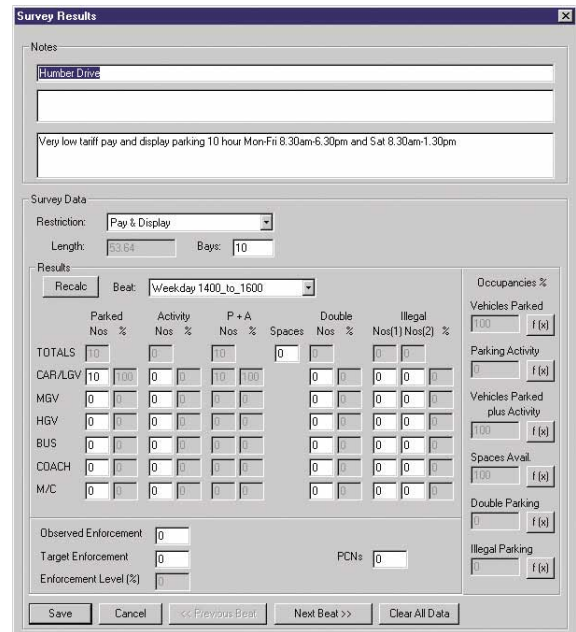
- Consolidate all existing and future survey data into a single database



- Simple data input function
- Flexible analysis
 - select analysis for any street, combination of streets or area
 - and any combination of parking regulations and vehicle classifications
- View survey findings on OS maps
- Produce tables of survey findings

ON STREET PARKING SUPPLY

- Draw parking regulations onto OS maps with ease
- Ability to link in existing ParkMap data



View 'survey information screens'

Simply click on a street in the map or select in the drop down menu

POTENTIAL USES

- Identification of locations with high or low parking pressure.
- Preparation of traffic and transport observations on planning applications - Development Control.
- To help with ongoing review of parking supply.
- Analysis of the need for and impact of parking schemes, such as CPZs, or extending controlled hours, or suitability of 'zoning' areas.
- Analysing the occupancy of metered bays to help set appropriate tariff levels.
- Policy initiatives reviewing provision and demand for different regulation types to make best use of supply.
- Identification of illegal parking 'hotspots'.



Desktop mapping

SurveyMap

SYSTEM REQUIREMENTS

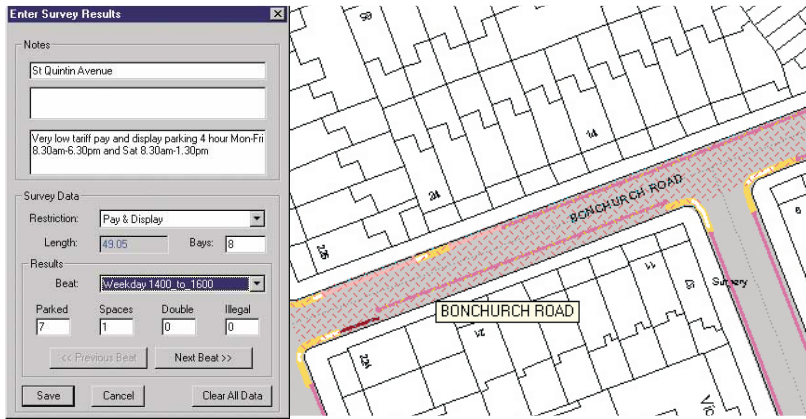
SurveyMap runs under Windows 98, 2000, XP or Vista. Microsoft and Citrix 'thin client' solutions are also suitable. Network licences for access over a local or wide-area network are available.

SurveyMap will output to any Windows-compatible colour or mono printer using paper sizes from A4 to A0.

MAP DATA

SurveyMap makes use of digital mapping, such as Ordnance Survey MasterMap and Address Point, available to local authorities under mapping service agreements. The base mapping is easily updated when revisions are received.

Developers and suppliers of computer systems for



Signing & lining



Road safety



Parking & orders



Desktop mapping



Traffic monitoring



Bus planning and operation



Bespoke development

On selecting the population for analysis, chose to view colour coded occupancy and/or produce tabular outputs based on your specifications as follows:

- Survey Time
- Regulation Types
- Vehicle Types

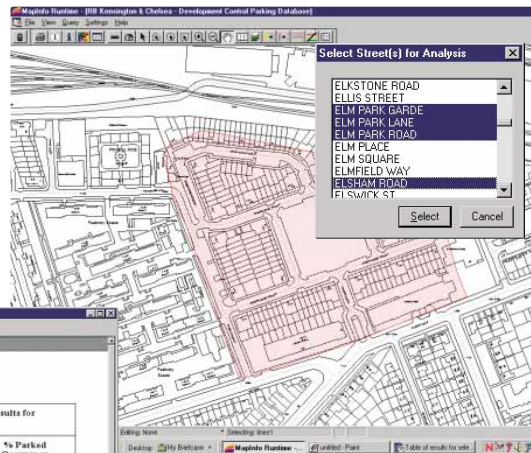


Table of results for selected area

Totals for individual streets

HASSETT ROAD, ST MARK'S ROAD TO LADBROKE GROVE - Survey Results for WEEKDAY MIDNIGHT TO 0600				
Regulation	Length (m)	Bays	Parked Vehicles	% Parked Occupancy
Resident	384.1	118	98	84.48
Total:	384.1	118	98	84.48

CAMBRIDGE GARDENS, LADBROKE ROAD TO ST MARK'S ROAD - Survey Results for WEEKDAY MIDNIGHT TO 0600				
Regulation	Length (m)	Bays	Parked Vehicles	% Parked Occupancy
Resident	191.4	81	77	95.86
Pay & Display	10.4	5	4	80.00
Total:	423.3	86	81	94.19

CHESTERTON ROAD, ST MARK'S ROAD TO LADBROKE GROVE - Survey Results for WEEKDAY MIDNIGHT TO 0600				
Regulation	Length (m)	Bays	Parked Vehicles	% Parked Occupancy
Resident	384.1	118	98	84.48

This is not a requirement however, and with the exception of analysis at the 'Regulation' level, you can still use the system to analyse parking data from surveyed streets.

Simple Data Capture

To enter new data you simply:

1. Click on a street in the map.
2. Or select a street in the drop down menu.
3. Then enter survey data into a form.

Or provide us your existing data which we will format then transfer automatically into the system.

Flexible Analysis

You can select in the map any combination of streets / areas for which you require analysis:

1. Click on a single or number of streets
2. Specify streets in a radius (m) from a point
3. Draw around an area of streets
4. Select pre-determined Wards/Parking Zones.

Alternatively select streets / areas in the drop down menu.

Analysis at the Regulation level

If parking regulations are mapped into the system, and/or ParkMap data transcribed, the capability exists to input and analyse data at the more detailed 'Regulation' level i.e. every individual section of parking regulation on a street.

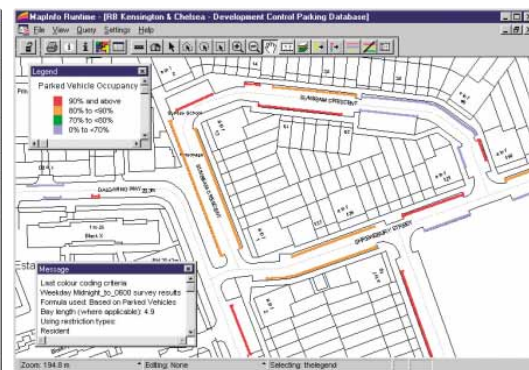
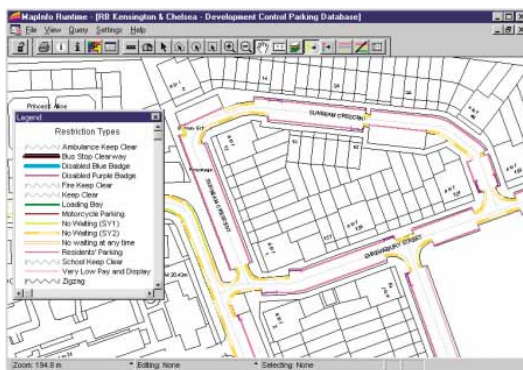
Data input is undertaken by simply clicking directly onto any section of regulation on the map.

The length (m) of each section, used to calculate occupancy during analysis, is captured directly from the map.

Analysis is identical to that at 'Street' level, including survey information screens (see example overleaf), and colour coded occupancy.

Map parking regulations / link to ParkMap

It is simple to draw and reference your proposed or current parking regulations in the map, and/or link in your existing ParkMap data.



An associated company of Colin Buchanan

Newcombe House, 45 Notting Hill Gate, London W11 3PB

Tel: 020 7674 3150 Fax: 020 7674 0464

Email: sales@BuchananComputing.co.uk www.BuchananComputing.co.uk



Software solutions for traffic professionals

MapInfo and MapInfo Professional are trademarks of MapInfo Corporation. Windows 98, XP and Vista are trademarks of Microsoft Corporation. MasterMap and Address-Point are trademarks of Ordnance Survey. Citrix is a registered trade name of Citrix Systems Inc. ParkMap, TrailMap, SignPlot, LineMap and SurveyMap are trademarks of Buchanan Computing Ltd. All other trademarks acknowledged.



Developed in association with Colin Buchanan and The Royal Borough of Kensington and Chelsea